

# E+ Green Community Mission Hill Community Meeting





# E+ Green Communities

Bringing energy, environmentally, and social equity positive development to Boston's neighborhoods

**Community Meeting** - April 11, 2012, Mission Church "Parish Center"

## 778-796 Parker Street and 77 Terrace Street Parcels

Meeting Objective: To summarize and review the March 10<sup>th</sup> Charrette points, come to consensus on key site criteria, so that we can focus discussion on the Request for Proposals at the next meeting.

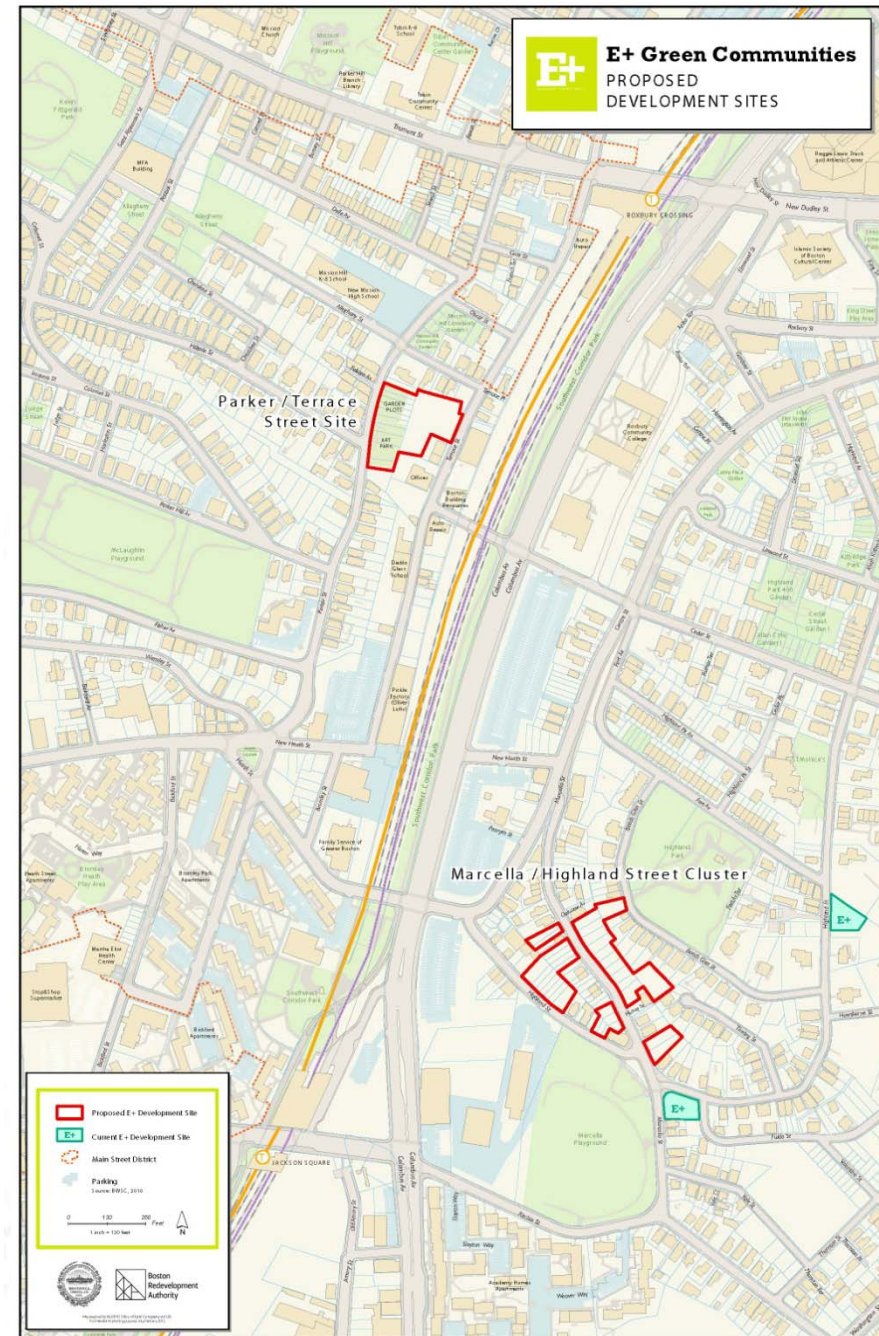
## AGENDA

- |   |         |
|---|---------|
| 1) Welcome/Introductions:                         | 10 min. |
| 2) Community Process Overview & Property Profile: | 15 min. |
| 3) Charrette Summary                              | 20 min. |
| 4) Site Urban Design                              | 40 min. |
| 5) Next Steps/Adjourn                             | 10 min. |

For additional information, maps and documents, please visit the BRA Web site: <http://www.cityofboston.gov/bra>, select "Planning Initiatives", and "E+ Green Buildings".

For questions or to be added to our contact list, please contact either:  
**David West**, DND at 617.695.0248, or [dwest.dnd@cityofboston.gov](mailto:dwest.dnd@cityofboston.gov)  
**John Feuerbach**, DND at 617.635.0353 or [jfeuerbach.dnd@cityofboston.gov](mailto:jfeuerbach.dnd@cityofboston.gov), or  
**John Dalzell**, BRA at 617.918.4334 or [John.Dalzell.BRA@cityofboston.gov](mailto:John.Dalzell.BRA@cityofboston.gov)

Thank You!







# E+ Green Communities

*Bringing energy, environmentally, and social equity positive development to Boston's neighborhoods*

**Community Meeting** - April 11, 2012, Mission Church "Parish Center"

## 778-796 Parker Street and 77 Terrace Street Parcels

Meeting Objective: To summarize and review the March 10<sup>th</sup> Charrette points, come to consensus on key site criteria, so that we can focus discussion on the Request for Proposals at the next meeting.

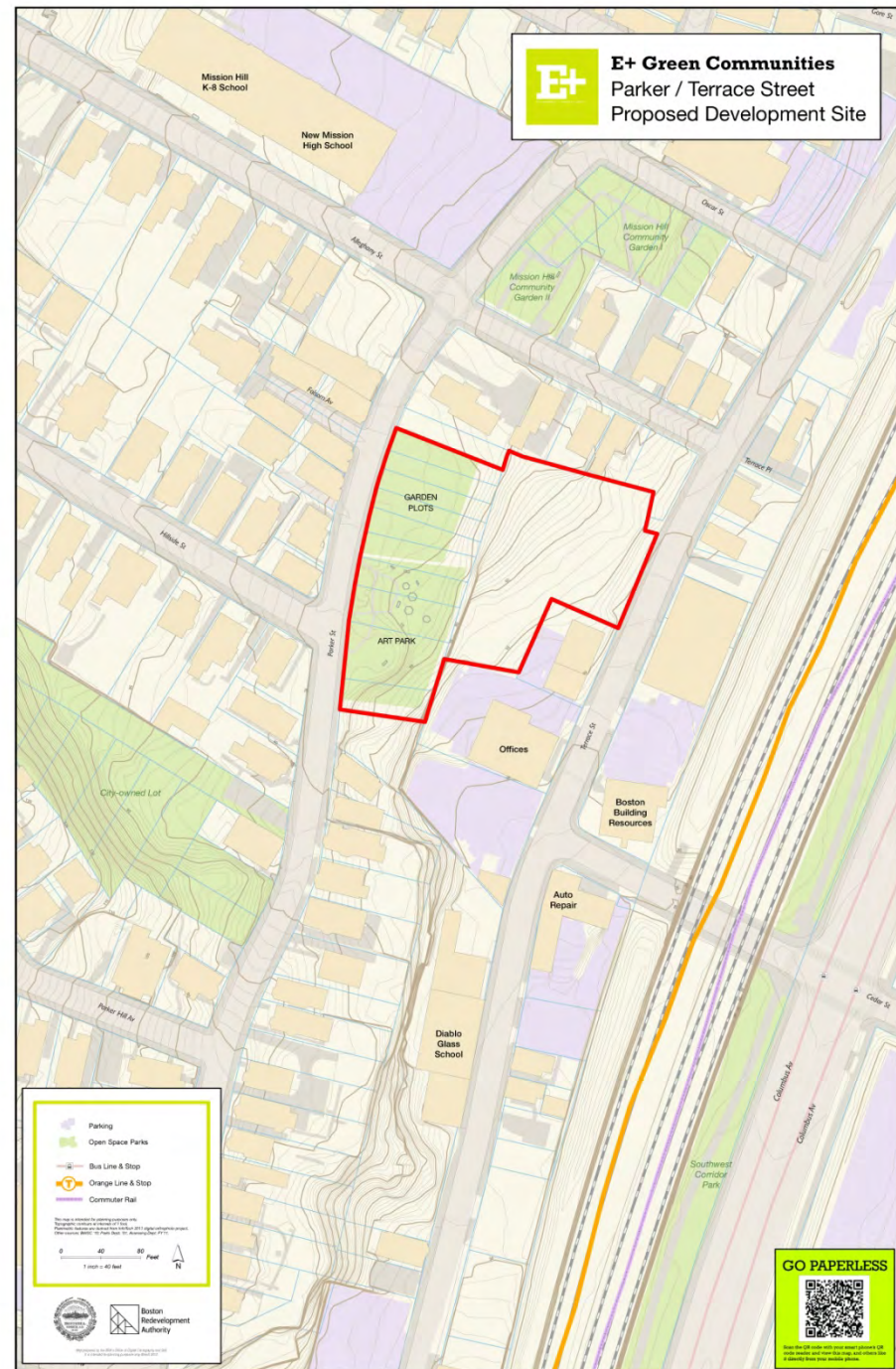
## AGENDA

- |   |         |
|---|---------|
| 1) Welcome/Introductions:                         | 10 min. |
| 2) Community Process Overview & Property Profile. | 15 min. |
| 3) Charrette Summary                              | 20 min. |
| 4) Site Urban Design                              | 40 min. |
| 5) Next Steps/Adjourn                             | 10 min. |

For additional information, maps and documents, please visit the BRA Web site: <http://www.cityofboston.gov/bra>, select "Planning Initiatives", and "E+ Green Buildings".

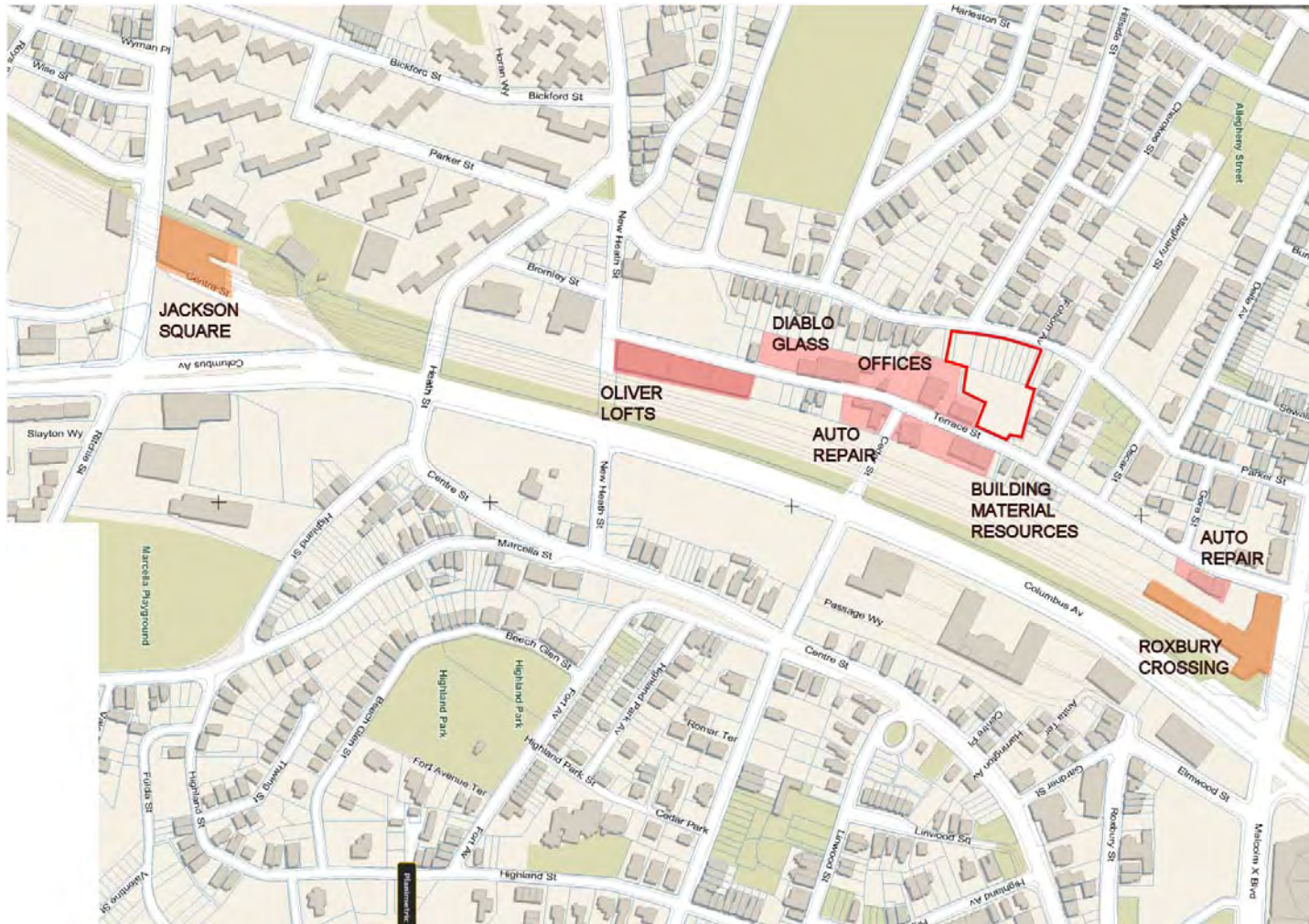
For questions or to be added to our contact list, please contact either:  
**David West**, DND at **617.695.0248**, or [dwest.dnd@cityofboston.gov](mailto:dwest.dnd@cityofboston.gov)  
**John Feuerbach**, DND at **617.635.0353** or [jfeuerbach.dnd@cityofboston.gov](mailto:jfeuerbach.dnd@cityofboston.gov), or  
**John Dalzell**, BRA at **617.918.4334** or [John.Dalzell.BRA@cityofboston.gov](mailto:John.Dalzell.BRA@cityofboston.gov)

Thank You!

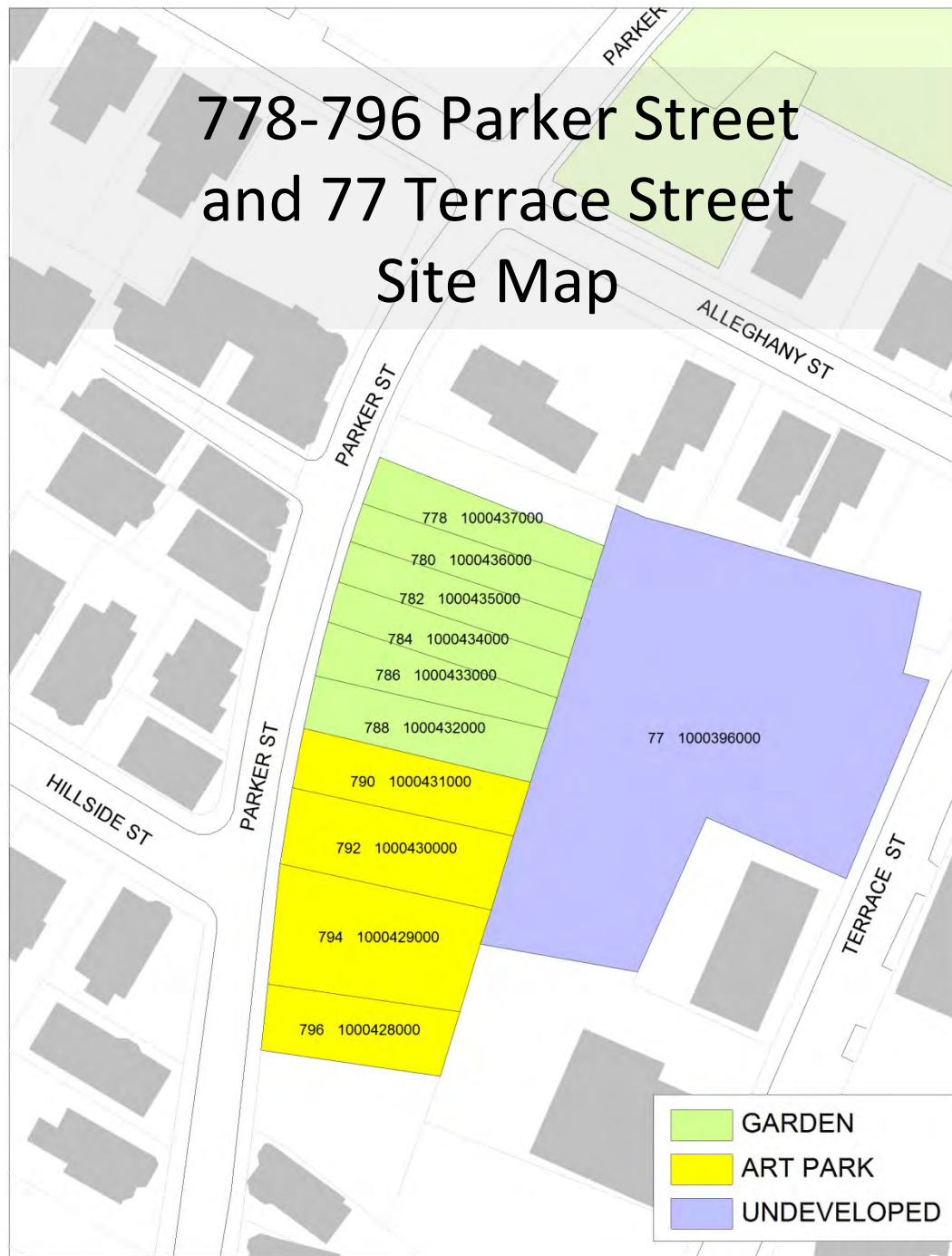




# Parker & Terrace Streets Locus Map



# 778-796 Parker Street and 77 Terrace Street Site Map







# Terrace St. Perspective





# Parker St. Perspective





# Parker Street - across from site





# Parker Street Garden





# Parker Street Art Park





# Parker Street Art Park





# Parker Street Art Park





# Charrette Summary



## E+ Green Communities

*Bringing energy, environmental, and social equity positive development to Boston's neighborhoods*

## MISSION HILL CHARRETTE SUMMARY NOTES

## COMMON THEMES

- Make this a "Place" /Create identity/Heal area
- Encourage activity, safety and accessibility
- Regeneration through productive landscape and Green/E Positive technology
- Conserve resources- capture storm water, generate energy onsite, keep fill onsite, retain natural elements, bio-remediate
- Uses should be community-supporting- Housing, Open Space, Economic Development
- Reduce traditional transportation demands/encourage walking, biking, zip cars
- Encourage synergy between new and existing/historic uses (breweries/industrial)

ASSETS

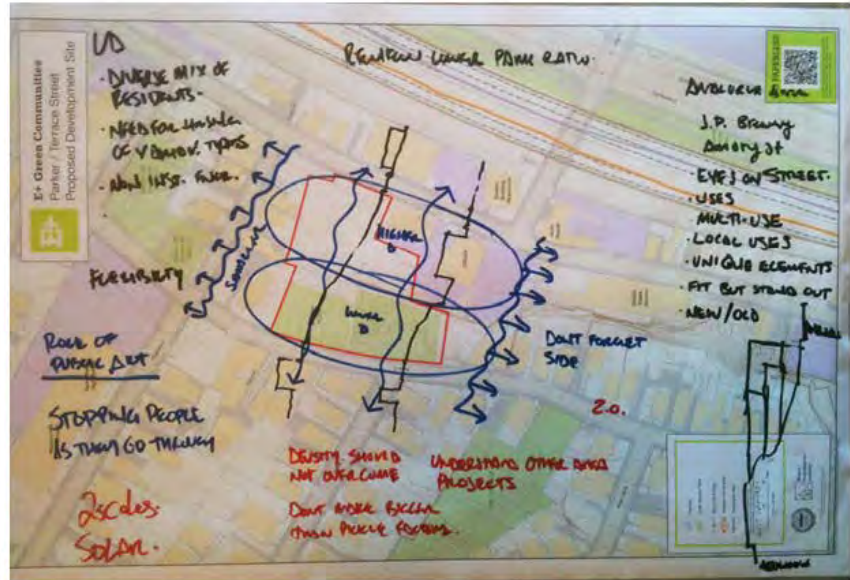
- Sun access/exposure
- Sense of community
- Art park (Brothers, Church Group)
- Garden plots
- T accessibility
- Access to amenities
- Green space/Corridor
- Diversity of residents
- Stonybrook-historic feature, resurrect in some fashion
- Connections with RCC and other neighborhood resources (Diablo, Boston Buildings Resources Coop)

## CHALLENGES

- Difficult site: topography, configuration, concrete, ragweed, accessibility
- Narrow Street (Terrace)/Need for traffic calming (Parker)
- Safety/walkability/bike-ability/ lighting/sidewalks/parking
- Reaching underserved community members/increasing social connections
- New use(s) need to complement existing uses

## GOALS

- Expand/connect/integrate art elements, gardening, development
- Complement existing uses/massing/strengthen street edge
- Connect sites-pedestrian/accessibility/social/landscaping
- "Green" Project- non allergenic, native, food system, roof garden, productive landscape
- Improve safety, security, lighting, accessibility
- Parker Street side of the site should reflect massing of surrounding buildings
- No storm water exit/harvesting rainwater
- Recapture energy-solar hot water heating/solar PV cells
- Explore parking/traffic solutions-meters, revolving/limited parking, below grade, street calming, signage



Ideas were drawn onto maps of the area



Priorities were summarized and "voted" upon



Group 1



Group 2

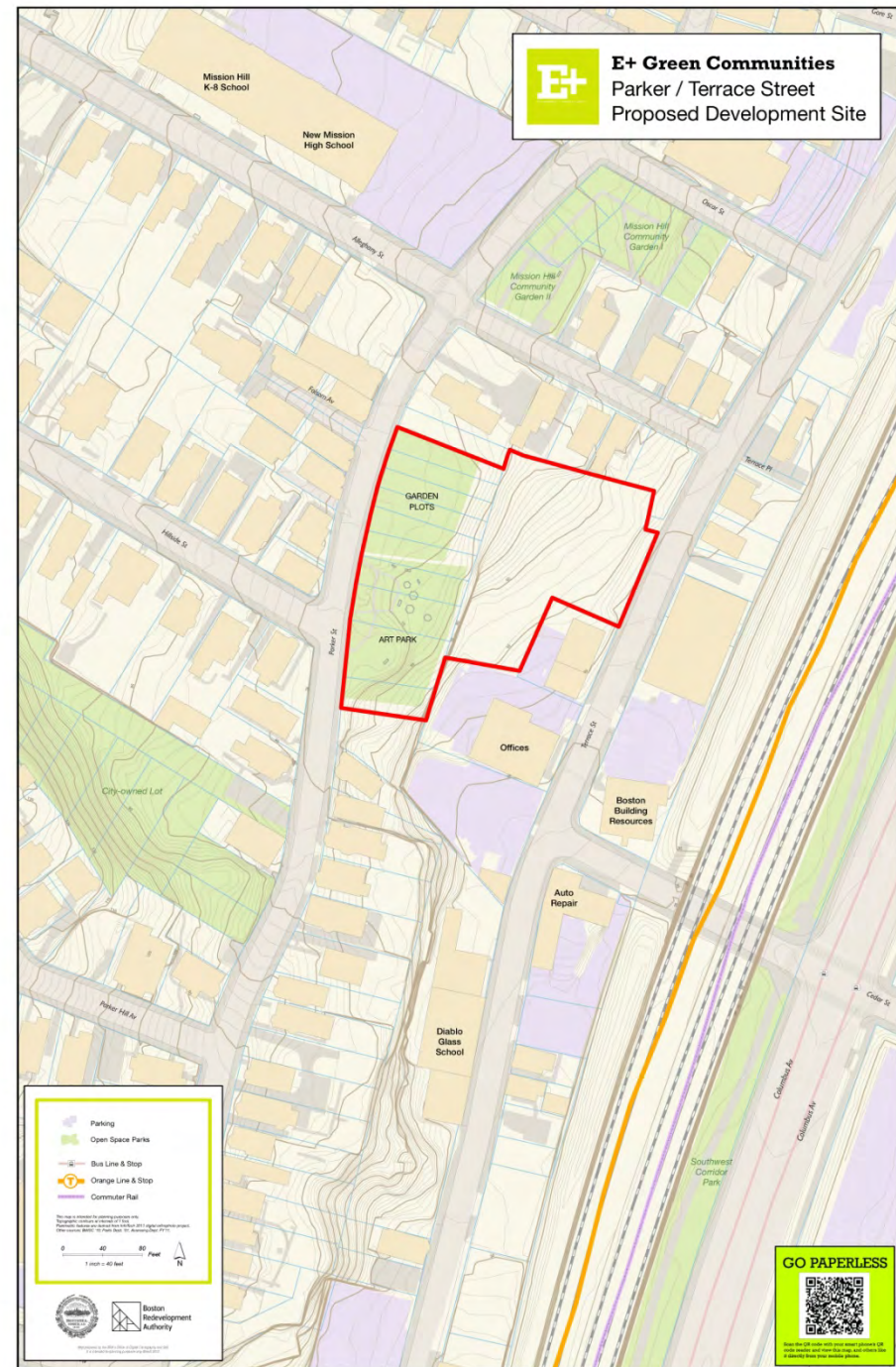




# Urban Design

## Key Elements

- Orientation & Topography
- Access & Circulation
- Uses & Character





## Next Steps

## Partners and Sponsors

### Next Steps

- Meetings and Schedule

### Partners and Sponsors

- Enterprise Community Partner
- National Grid and NSTAR
- Massachusetts USGBC Chapter
- Boston Society of Architects
- US Green Building Council

*Presented by the Department of  
Neighborhood Development and  
the Boston Redevelopment  
Authority*





ENVIRONMENT + ENERGY + EQUITY



Thomas M. Menino  
Mayor

Boston Redevelopment Authority  
Boston Public Health Commission  
Department of Neighborhood Development







# Current Conditions



**E+ Green Communities**  
PROPOSED  
DEVELOPMENT SITES

**2008 Oblique Imagery**  
*Courtesy of Pictometry Inc.*



GO PAPERLESS



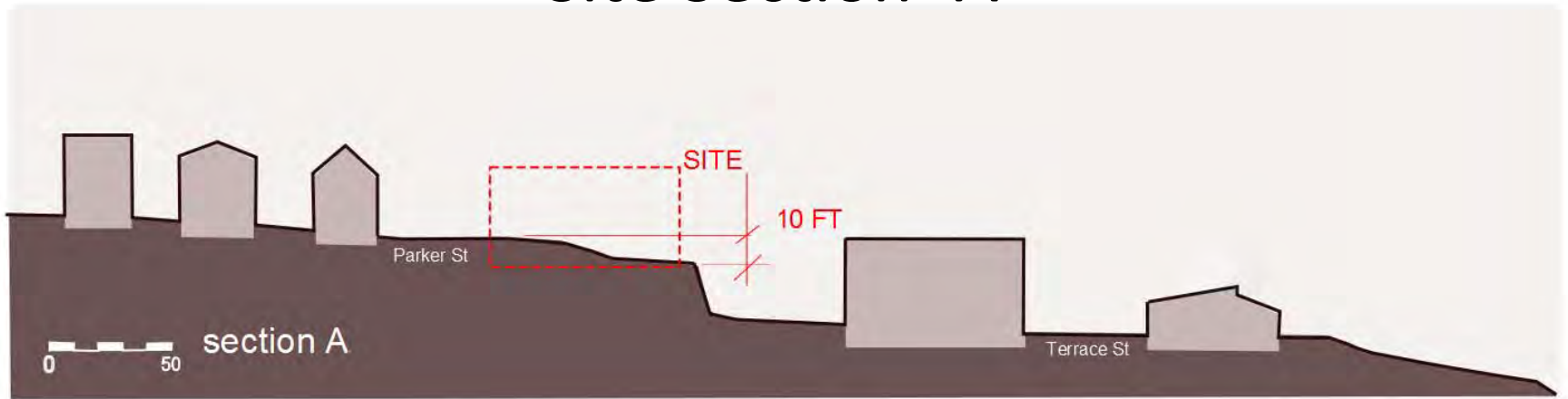


# Parker and Terrace Streets - Site Map

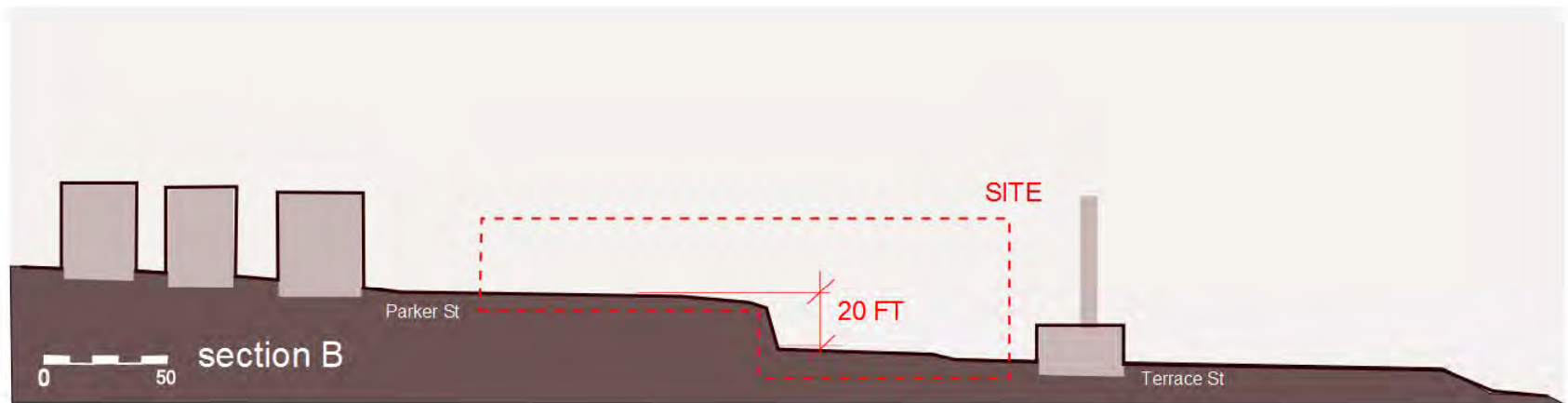




# Site Section- A

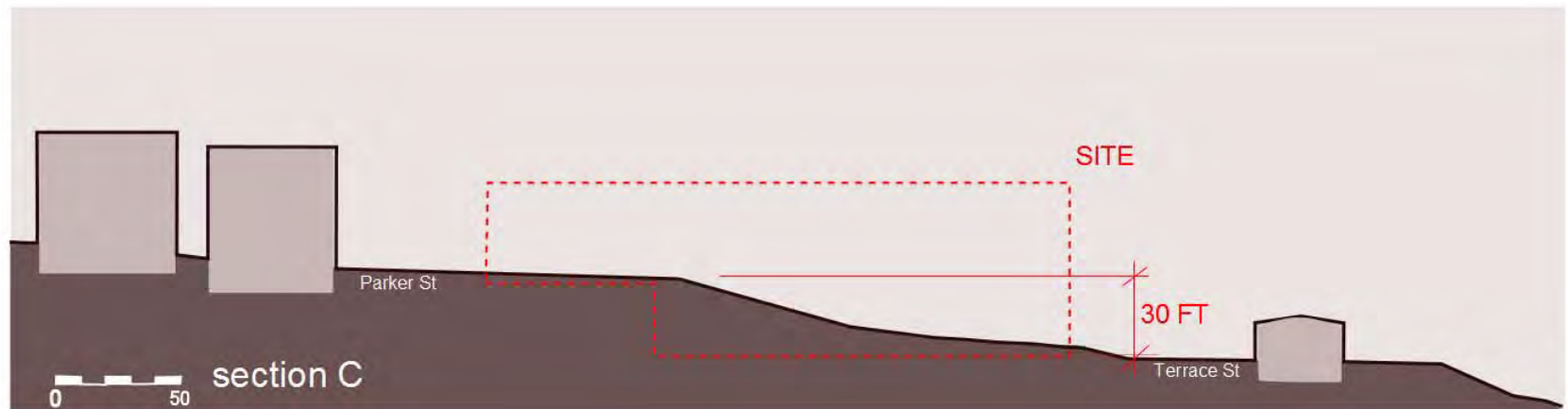


# Site Section- B





# Site Section- C



# Site Section- D

